

SOLENT R.C.M.Y.C Scale Section



NEWSLETTER WINTER 2018

Captains Chat

Hi Folks

Welcome to the latest club update.

I hope that you have all enjoyed the summer sailing, we have certainly had some varied weather and the long hot spell has depleted the water level but hopefully it will refill again over the winter months.

You may have noticed that the Sailing Section have installed an extra buoy and relocated one or two which has resulted in narrowing down the fast boat lane but please ensure that you still use them as a margin for the fast boat operations. I have also noticed that members with sailing craft are starting to creep into and operating in the car park end of the lake, this is giving little room for collision avoidance with the scale power craft so can I please request that you all stay within the designated operating areas on club days which are shown on the map in your membership card .This will be much appreciated and make for sailing safer for us all .

We have had two fantastic shows this year which have raised money for our chosen charities and I would like to thank all the members and their partners who have supported the events by exhibiting, helping and giving their time to make them such a success and especially to Lorna for obtaining “gift matching” from her company It is a fantastic experience to see the variety of models and high standard of model building that exists in the club.

I must apologise for the cancellation of the two Steering Competitions this year I am afraid that weather and water conditions linked with my unforeseen personal and family situations resulted in the decisions to cancel, I hope to be able to run at least one next year. As the dreaded age begins to take over I am finding that having to sort out all the equipment and load it into my car the day before, unloading to set up, wading around the lake nearly up to my chest in water, dismantling and then restoring all the gear on the return home can be a bit of a struggle at times!!!

Navy Day was its usual success with a good attendance and support from members.

On a similar issue I was approached early in the year by Jim Forrester with a suggestion that we hold a Gaff Rig/Vintage Period Sailing Day run on similar lines to Navy Day with a lakeside display and free sailing on the pond, I sent out a email to get some idea if it would be supported but only received four replies so proceeded no further. I will raise it again at the AGM to see if there is any more interest to do it next year?

I am looking forward to meeting many of you at the Annual Xmas Lunch on December 8th, I believe it has now sold out and I thank Lorna and Andrew for once again arranging it for us.

Finally can I remind you to keep your eye on the website to look for up to date club information and remember it is always there for you to upload photos of your models and have your own gallery of models, if you are unsure how to put items on the site please contact Peter Taylor who will be only too pleased to assist you.

See you at Setley.
David

Dates for your Diary

- | | |
|--|--|
| Saturday 8th December 2018 | Xmas Lunch, Walhampton Arms, Walhampton Hill, Lymington, SO41 5RE |
| Saturday 23rd March 2019 | Highcliffe Show, Highcliffe Sports and Social club, Lymington Road, Highcliffe 10 till 3pm(set up from 8am, models from 8.30am) opposite Tesco Express. |
| Saturday 31st August 2019 | Annual Milford on Sea Charity Exhibition, 10am till 4pm. All Saint's Church Hall, Milford on Sea, SO41 0SQ (set up Friday 30 th August from 4pm till 7pm) |

Newsletter and Website

If you would like an article or information included in the Newsletter please advise Lorna and if you would like articles, information, photo's etc included on the website please contact Peter Taylor who will be happy to assist you.

Highcliffe Show

Next year's Highcliffe Show has been booked again at Highcliffe Sports and Social Club for the 23rd March 2019, please mark it in your diary's.



Club Display at The South west Model Show in the Tank Museum 13/14 October 2018

We had a small club display of lifeboats and warships at this twice-yearly event held in the Tank Museum at Bovington.

Unfortunately due to sickness and holidays our participants were reduced to Graham Coombs, Penny Coombs, Charles Davis (Guest from SWA) and Myself.

As the full set up must be completed by 9.30 am on the Saturday morning (doors and access is locked after that until 5pm) Charles and I met on the Friday afternoon to set up the tables and display items together with some of the models and so avoided the mad rush of exhibitors unloading on the morning of the show.

Despite the wet weather and heavy rain the exhibition was very busy with many visitors. As the displays mainly comprise exhibits by IPMS Clubs and Model Armour Groups our display of model boats and ships attracts a lot of interest.

There are also quit a few stands by Modelling suppliers selling kits, glue, paints etc. Club members John Wills and Alan Bond were also in attendance manning the “Scale warship” company stand adjacent us.

After a busy show we were a little worried how wet we would get loading our vehicles after all the heavy rain on the Sunday, however as it happens we had a break in the weather by the time the access doors were opened at 5pm and we were able to pack up and keep dry.

We will hopefully be showing again at the next event in February to publicise the club.

David





Milford Exhibition

Next year's Milford Exhibition has been booked for the 31st August 2019, please mark it in your diary's



Club Clothing

The club have the following items for sale in all sizes.

Fleeces

Sweatshirts

Polo shirts

Caps (all one size)

Prices are on the website.

The club clothing make excellent Christmas presents, if you would like any item of clothing please contact Lorna.

Badges

Available now. New Club enamel badges, badge diameter 25mm price is only £2.00 each, they will be sold at the pond or can be posted, please contact Lorna if you would like one.



Calendars



The club have Wall calendars and CD Landscape calendars again this year, these will be sold at the Pond and can also be posted. The prices will be the same as last year Wall £4.00 and CD £2.50, they are also good Christmas presents if you would like one please contact Lorna.



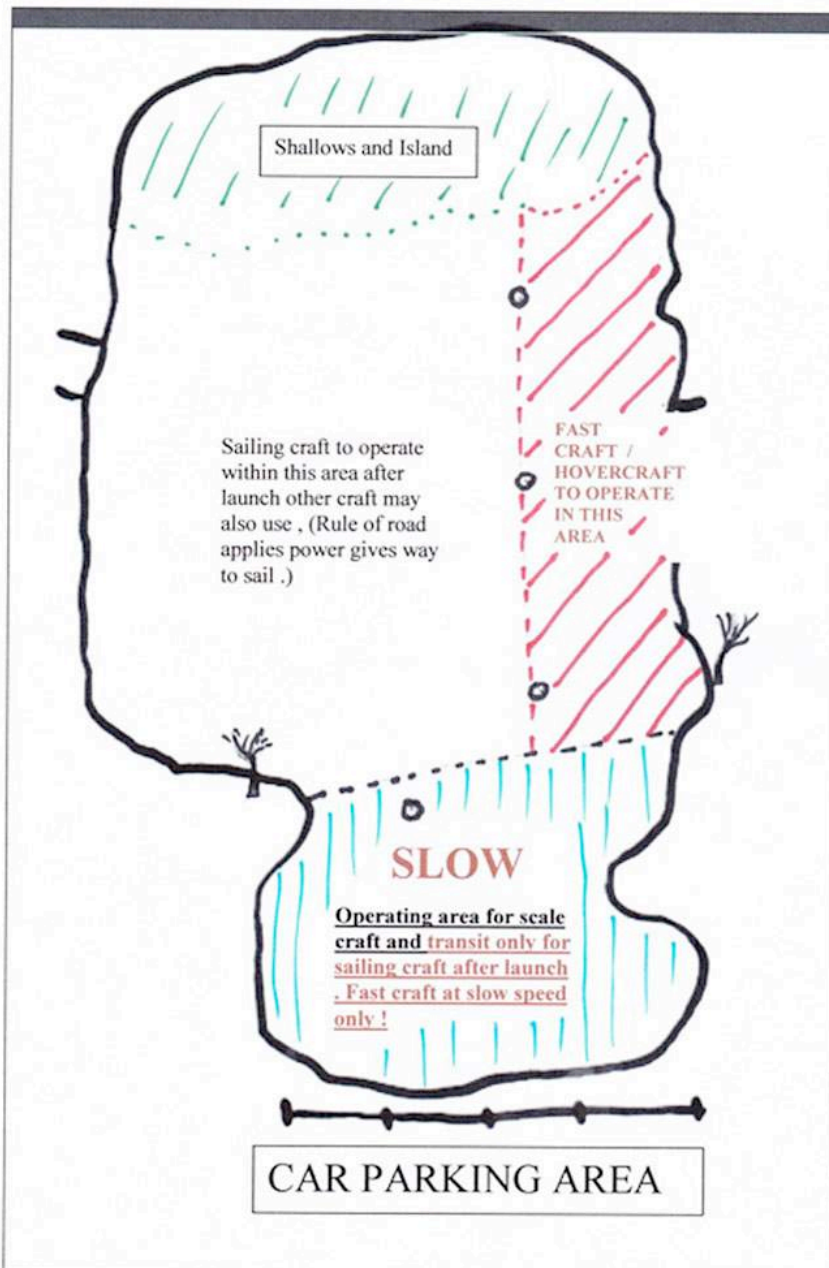
Boats for sale or free

On the Adverts page the club have some boats for sale from a previous member, if any take your interest please contact Brian re email.

Also free boats and hulls donated to the club from the family of previous member, again if any take your interest please contact Lorna.

Also boats from present members have a look they may be of interest to you.

SETLEY POND OPERATING AREAS ON CLUB DAYS



Note re **FAST CRAFT AND HOVERCRAFT OPERATIONS** :- These may be operated at high speed only within the designated area, operators should be able to see and control their craft at all times and take action to avoid collisions. During times when fast craft are not operating others may use this area but be prepared to exit it and remain clear if required.

Shortcuts: [Club/Pond/Web News](#) - [What's New: Scale?](#) - [What's New: Sailing?](#)

Main Menu: [Scale Section](#) - [Sailing Section](#) - [Contact/Join:](#) - [About:](#) - [Log in](#)

CLUB, POND & WEBSITE NEWS

P Pond Road Now Open
25 MAY, 2018

LATEST SAILING SECTION RESULTS

- 6M Summer Race 4: 27th June 2018
- IOM Summer Race 04: 26th June 2018
- DF95 Summer Race 04: 23rd June 2018

LATEST SCALE SECTION NEWS

- Steering Competition from May is now Re-Arranged.
20 JUN, 2018
- Xmas Lunch 2018
19 JUN, 2018
- OMRA at Calshot
18 JUN, 2018

SRCMYC/SRCMBC HOME PAGE

The **Solent Radio Controlled Model Yacht Club** is based at **Setley Pond**, Hampshire, situated a few miles south of Brockenhurst, in the New Forest, southern England.

The Club has two Sections:

Solent Radio Control Model Boat Club

SOLENT Scale Section

The **Scale Model Section**... Warships, tugs, square rigged sailing ships, yachts, scale vessels of all types! The Scale Section meets on Thursday and Sunday mornings and may also use the pond during afternoons (except Saturdays and Tuesdays).

Solent Radio Controlled Model Yacht Club

SOLENT Sailing Section

The **Yacht Racing ("Sailing") Section**... International One Metre, R36R, DF95, Marbleheads, 6m Class, Americas Cup Class. The Sailing Section meets at the pond on Saturdays and Tuesdays, and on Monday, Wednesday, and Friday mornings

LATEST SAILING SECTION NEWS

Important: M & S R36 Champs Postponed
8 MAY, 2018

LATEST SCALE SECTION ADVERTS

- Boats and Hulls for Sale
16 JUL, 2018
- New Scale Section Enamel Badges
13 JUN, 2018
- Free Boats and Hulls (via Membership Secretary)
5 JUN, 2018
- Scottish Fishing Vessel (from Roger Yeatman)
13 MAY, 2018

SRCMBC © 2008-2018. All Rights Reserved. [Privacy Policy](#)
Powered by - Designed with the [Human](#) theme

The above is how the Website looks on the home page, if anyone would like to put any articles, photos, information for everyone to read and enjoy, please contact Peter or David.

Please visit the Website regularly as this is the place for important information etc, some information is not sent by email anymore, please check.

Club contact details

For Club queries, Newsletters etc:

The Scale Section Captain : David McNair-Taylor

Email: scalecaptain@srcmbc.org.uk Phone 07887 967887

For Club Merchandise and Membership Matters, Newsletter.

Lorna Soffe: 1 Stoneleigh Avenue, Hordle, Lymington, SO41 0GS.

Email: membership@srcmbc.org.uk Phone 01425 615305

For the Club Website (www.srcmbc.org.uk):

Peter Taylor, 84 Priory Road, St Denys, Southampton, SO17 2HS.

Email: info@srcmbc.org.uk Phone 02380 554670 (leave message on answering machine)