

# SOLENT R.C.M.Y.C Scale Section



## NEWSLETTER

October 2019

---

### **Captains Chat Autumn 2019**

Hi and Welcome to the Autumn newsletter.

Despite not being able to attend the club sailing days and events over the Summer I am assured that all went well in my enforced absence and I am pleased to say that I am now well on the mend and hope to be a regular attender again. My thanks to all who kept things running smoothly whilst I was incapacitated.

Despite the falling water level at Setley due to the lack of rain I am pleased to say that we have still been able to continue to sail. Hopefully the lake will refill over the winter months.

Unfortunately, we recently had several complaints passed to us from the Forestry Commission that they have received from members of the general public where it has been reported that one of our members (sail or scale?) has been telling visitors that dogs must be on a lead, they cannot park adjacent to the lake and that we have exclusive use of the pond, as yet the member in question has not been found, can I remind you that the pond is a public place and we cannot prevent members of the public from parking, walking dogs or sailing models we do however pay for the club to use the pond for our club days and activities which gives us priority and the ability to run our organised days and events, if

we have a problem with out of control dogs, fishing, vandalism etc you may ask politely for co-operation, do not get into a confrontation but if possible get a registration number which I can send to the FC who will deal with the matter. Please see the communication from the FC with action we can take which is printed in this newsletter.

As the area of available water has decreased, we have had several collisions and near misses due to the restricted water space available at the car park end of the lake so can I please ask that you familiarise yourself with the allocated sailing areas shown on the back of your membership card for the different types of model you wish to sail and ensure you comply on club days. Unfortunately, accidents do happen so if you do have a collision please apologise to the other member and check that no lasting damage has been done. Thank you.

Most of the club events for 2019 are now completed and I hope you have all enjoyed watching or taking part. The Milford On Sea Exhibition went really well and I certainly appreciated the additional help I received in setting it up and running the day, especially to the ladies who worked so hard in the kitchen. The final event for 2019 will be the Xmas Lunch which is planned for Saturday 7<sup>th</sup> December at the Walhampton Arms in Lymington and I hope to meet many of you there.

Can I remind you that I will not be standing for re-election at the 2020 AGM in April, so we need nominations for my replacement and also for three or four committee members to support the new captain and ensure the continued management of the club. I must say that I have enjoyed the role of Captain for the last 15 years or so, but I feel that the time has come to hand over to a new leader.

The future of club exhibitions and the charities we support will also be discussed at the AGM, we have already booked the Highcliffe Sports and Social Club for our March Exhibition which will be the last one I shall be organising, although I am still willing to fully participate and support future events.

Sorry if my chat appears to have a few moans and groans but that happens sometimes!!!

Finally, I hope that you and your families all have a Very Happy Christmas and wish you all the very best for 2020.

Happy sailing

David

---

The Committee had comments from members concerning problems re the use of the pond. We received the following from the Forestry Commission.

Dear David,

Many thanks for your email regarding issues at Setley Pond, I am sorry to hear that your members have been experiencing issues with members of the public accessing the pond. We do have a limited team of ground staff who can respond to issues as they occur, depending on other priorities at the time, so it is worth highlighting our call centre number to your members- 0300 067 4600 -which is a 24-hour number. It may be that staff are already attending other incidents but is often the best way to get an immediate response where we can, to deal with issues.

I have also cc'd in the southern permissions email address into this email where incidents can be reported. If number plates are taken, we can potentially write out to frequent offenders or where relevant, pass onto the police.

Signage is another option. Although we are restricted by the amount of additional infrastructure and signage. It is a discussion we have recently had around other water bodies, such as Hatchet Pond or Balmer Lawn, and are looking at ways we can get across some of the "no messaging" such as no swimming. I will ensure that Setley Pond is added to the list

of sites for discussion around signage to see what improvements can be made.

Kind regards

Zoe

**Zoe Cox**

**Community Manager**

Forestry England  
South England Forest District

The Queens House  
Lyndhurst

Hants, SO43 7NH

---

### **Dates for your Diary**

**Saturday 7<sup>th</sup> December 2019** Xmas Lunch, Walhampton Arms,  
Walhampton Hill, Lymington, SO41 5RE

**Saturday 14<sup>rd</sup> March 2020** Highcliffe Show, Highcliffe Sports and  
Social club, Lymington Road, Highcliffe  
10am, till 3pm (set up from 8am, models  
from 8.30am) opposite Tesco Express.

---

## Badges

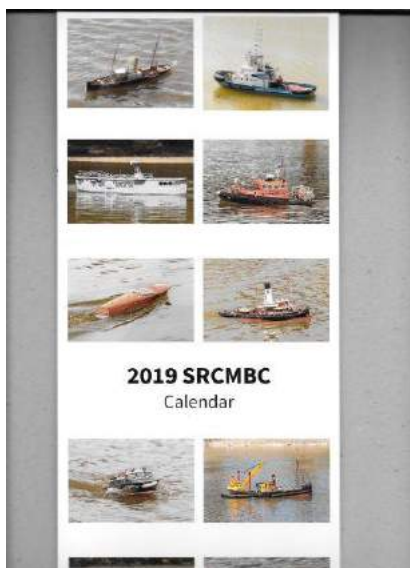
Available now. Club enamel badges, badge diameter 25mm price is only £2.00 each, they will be sold at Highcliffe Show and at the pond, please see Lorna if you would like one.



---

## Calendars

The Club have Wall calendars and CD Landscape calendars again this year, these will be sold at the Pond and can also be posted. The prices will be the same as last year Wall £4.00 and CD £2.50, they are also good Christmas presents if you would like one please contact Lorna.



## **Xmas Lunch**

The Xmas Lunch is again at Walhampton Arms, Walhampton Hill, Lymington SO41 5RE it is booked for 7<sup>th</sup> December 2019, 12.30 for 1pm, we will also be doing a raffle for Charity. Menu on website or contact Lorna



---

## **Newsletter and Website**

If you would like an article or information included in the Newsletter please advise Lorna and if you would like articles, information, photo's Etc included on the website please either put them on Website yourself or contact Peter Taylor who can assist.

---

## **Highcliffe Show**

Next year's Highcliffe Show has been booked again at Highcliffe Sports and Social Club for the 14<sup>rd</sup> March 2020, please mark it in your diary's.



---

## **Club Clothing**

The club have the following items for sale in all sizes.

Fleeces

Sweatshirts

Polo shirts

Pilot Shirts (now back in stock)

Caps (all one size)

Prices are on the website.

If you would like any item of clothing, please contact Lorna

---

# Steering Competition – 25th Aug 2019



On a fine Sunday morning with only a little wind we set up a course comprising 15 buoys and two large obstacles for members to compete in the Annual Steering Competition to win the Richard Graham Trophy.

The field was smaller than on some previous occasions with 8 members competing in two rounds to complete the course by avoiding hitting any buoy or obstacle in the fastest time which proved to be rather challenging in places. The only clear round and the winner was The Club Captain with his model of HMS Kirkliston.

The full results were as follows: -

Place	Name	Faults(mins)	Boat
1st	David McNair-Taylor	0	Minehunter
2nd	Nick Leaper	1	French Trawler
3rd	Dave Reith	2	Minehunter
4th	Vaughan Jackson	3 (1.52m)	Fishing Trawler
5th	Steve Watling	3 (2.13m)	Launch



Place	Name	Faults(mins)	Boat
6th	Olly Chapman	3 (3.53m)	RAF Launch
7th	John Tybjerg	4	–

Please note that in the future we will only be holding one steering Competition per year.

## Milford Model Boat Show 2019



The annual Milford Model Boat Exhibition was again a great success, which collected £302.40 for both Charities.

# The South West Model Show 2019



Joint Surface Warship Association (SWA) and Solent Radio Control Model Boat Club (SRCMBC) members David McNair-Taylor and John Wills joined SWA members Charles Davis and Ken Winter, and SRCMBC members Graham and Penny Coombs, to put on a display of warships and lifeboats at the Autumn Edition South West Model Show held on the 28th and 29th September at the Tank Museum in Bovington, Dorset.

Despite the poor weather over the two days we had a reasonable number of visitors to the show although there were considerably fewer clubs and traders than in previous years.

We set up on the Friday afternoon to avoid the mad rush on Saturday morning and the stand display comprised four lifeboats and fourteen warships.

## NCI Calshot Tower: QAVS and Lepe Country Park

At the Calshot Tower station of the National Coastwatch Institution (NCI) we are very grateful for the donations received from the SRCMBC; some news of our activities may be of interest to club members.

The year's major event was that NCI Calshot Tower was honoured with the Queen's Award for Voluntary Service, the highest award that a voluntary group can receive in the UK. The award was presented to the station by the Lord Lieutenant of Hampshire during a ceremony held in September.



This summer a new sub-station of NCI Calshot Tower was opened at Stone Point in Lepe Country Park. This was in response to a request from Hampshire County Council, and with encouragement from HM Coastguard. Initially the station has been staffed at weekends and Bank Holidays and for each day during Cowes Week.

Following this successful trial, "NCI Stone Point" has been judged a valuable facility and operations will be continued into the future with, when possible, extended staffing hours. Eventually it is planned to

replace the small, mobile unit with a more robust structure which will be designed to be more in keeping with the beauty of the Country Park.

All these activities are only possible due to the generous donations from the public, including those from the SRCMBC, for which Our Thanks!

If you are visiting Lepe at the weekend, do call in and say hello!

Peter Taylor

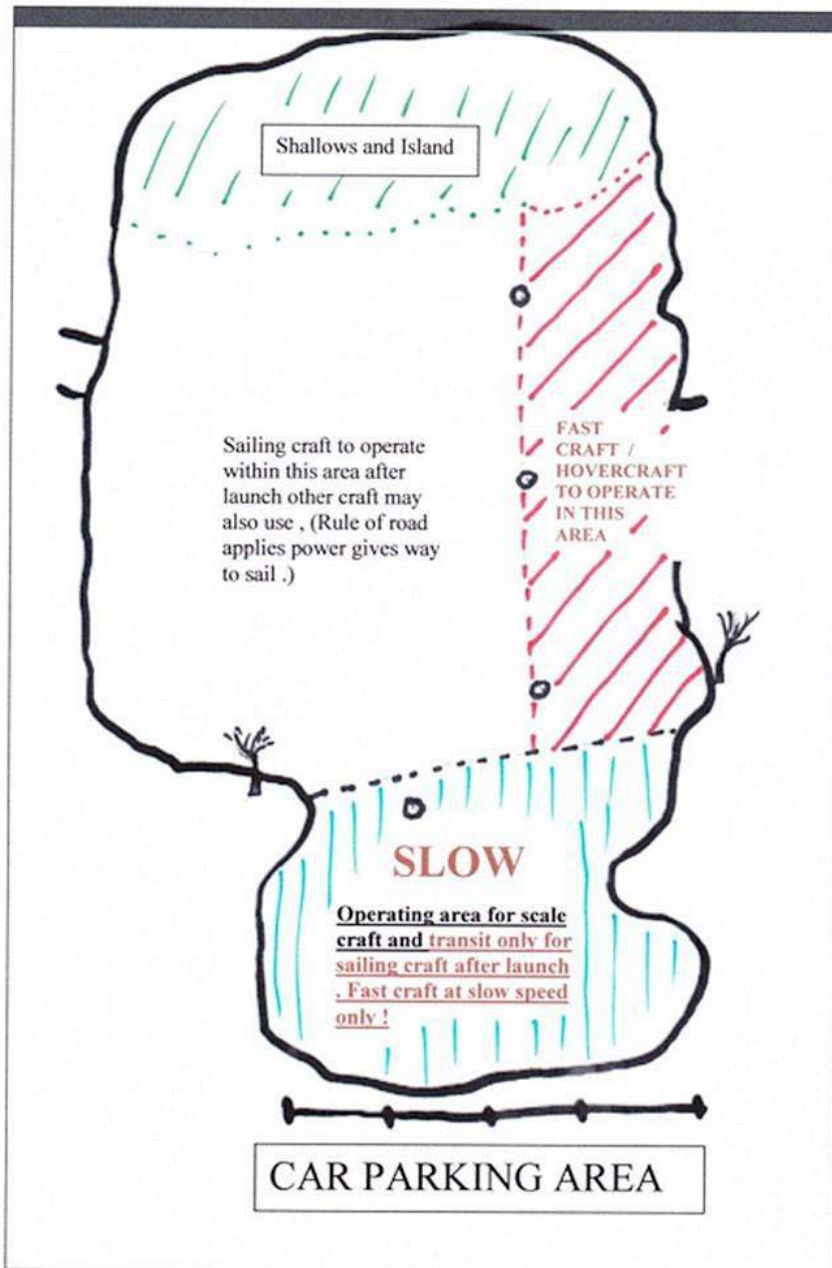
---

## **Boats for sale**

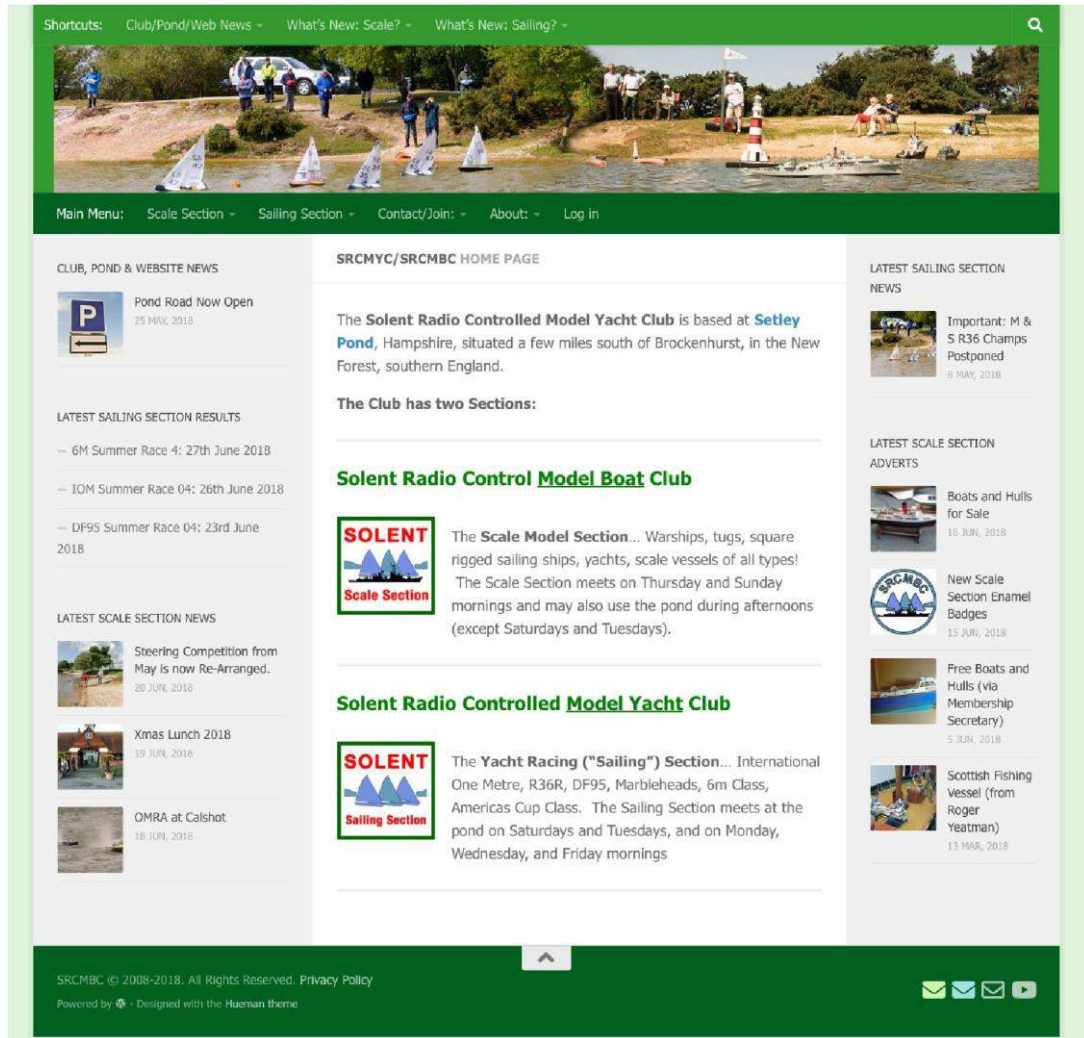
On the Adverts page the club have some boats for sale from previous members or members of the public.

Have a look they may be of interest to you,

## SETLEY POND OPERATING AREAS ON CLUB DAYS



Note re **FAST CRAFT AND HOVERCRAFT OPERATIONS** :- These may be operated at high speed only within the designated area, operators should be able to see and control their craft at all times and take action to avoid collisions. During times when fast craft are not operating others may use this area but be prepared to exit it and remain clear if required.



The above is how the Website looks on the home page, if anyone would like to put any articles, photos, information for everyone to read and enjoy, please contact Peter or David.

Please visit the Website regularly as this is the place for important information etc, some information is not sent by email anymore, please check.

**Club contact details**

**For Club queries, Newsletters etc:**

**The Scale Section Captain: David McNair-Taylor**

Email: scale [captain@srcmbc.org.uk](mailto:captain@srcmbc.org.uk) Phone 07887 967887

**For Club Merchandise and Membership Matters, Newsletter.**

**Lorna Soffe:** 1 Stoneleigh Avenue, Hordle, Lymington, SO41 0GS.

Email: [\\_membership@srcmbc.org.uk](mailto:_membership@srcmbc.org.uk) Phone 01425 615305

**For the Club Website ([www.srcmbc.org.uk](http://www.srcmbc.org.uk)):**

**Peter Taylor,** 84 Priory Road, St Denys, Southampton, SO17 2HS.

Email: [info@srcmbc.org.uk](mailto:info@srcmbc.org.uk) Phone 02380 554670 (leave message on answering machine).